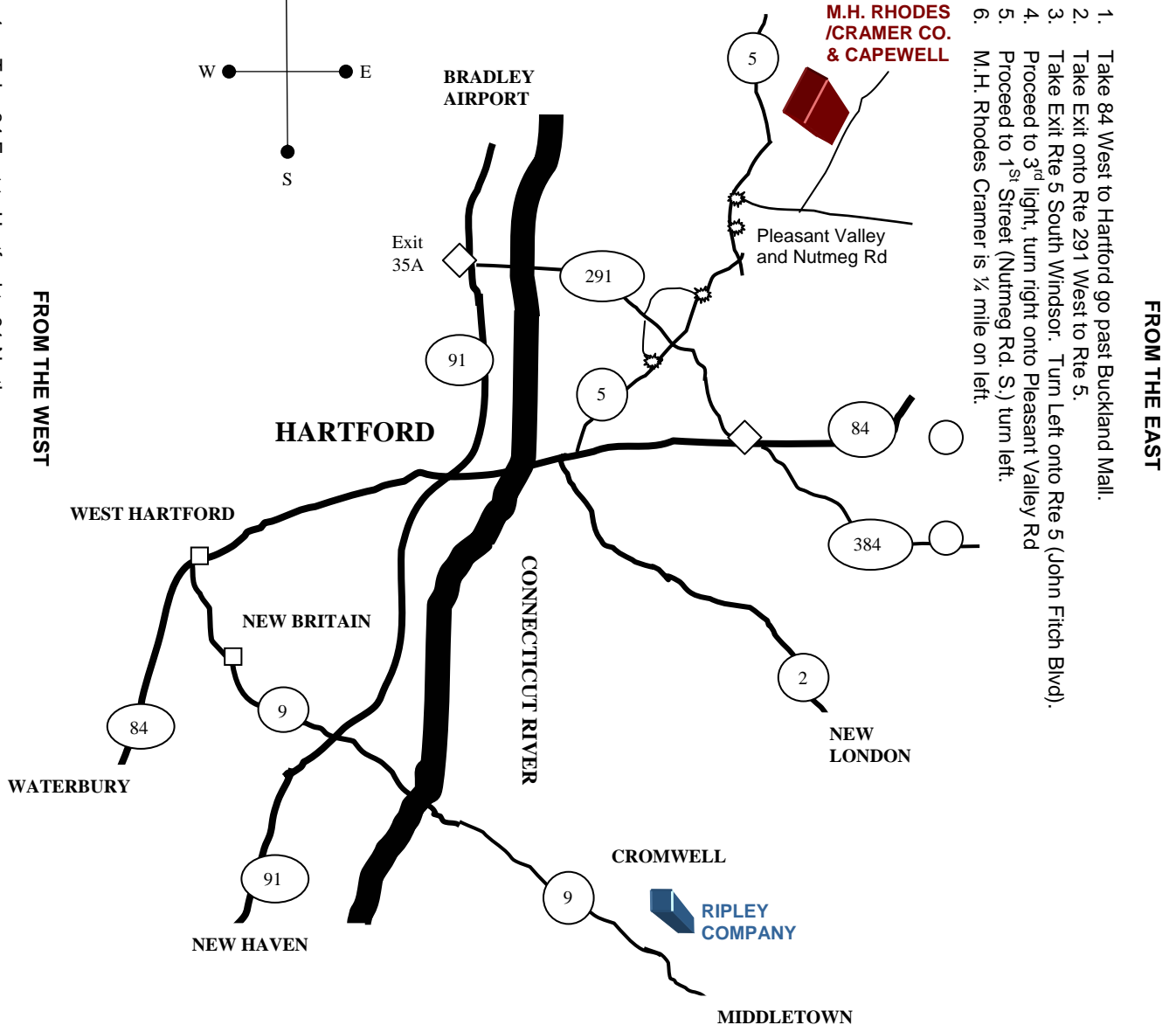
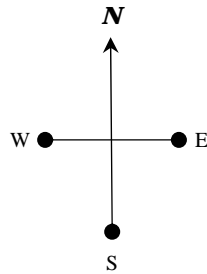


Division of Capewell Components Co., LLC
 105 Nutmeg Road South
 South Windsor, CT 06074 USA
 PH: 877.684.6464 or 860.291.8402
 FX: 860.610.0897

FROM THE NORTH

1. From the Bradley Airport take 91 South to Rte 291 East.
2. Exit 35A (Manchester) onto Rte 291 East and proceed to Rte 5.
3. Take Exit Rte 5 South Windsor. Turn Left onto Rte 5 (John Fitch Blvd).
4. Proceed to 3rd light, turn right onto Pleasant Valley Rd
5. Proceed to 1st Street (Nutmeg Rd. S.) turn left.
6. M.H. Rhodes Cramer is ¼ mile on left.



FROM THE SOUTH

1. Take 91 North past Hartford to Rte 291.
2. To Exit 35A (Manchester (Rte 291 East)) proceed to Rte 5.
3. Take Exit Rte 5 South Windsor. Turn Left onto Rte 5 (John Fitch Blvd).
4. Proceed to 3rd light, turn right onto Pleasant Valley Rd
5. Proceed to 1st Street (Nutmeg Rd. S.) turn left.
6. M.H. Rhodes Cramer is ¼ mile on left.

- FROM THE WEST**
1. Take 84 East to Hartford to 91 North.
 2. Exit 35A (Manchester) onto Rte 291 East and proceed to Rte 5.
 3. Take Exit Rte 5 South Windsor. Turn Left onto Rte 5 (John Fitch Blvd).
 4. Proceed to 3rd light, turn right onto Pleasant Valley Rd
 5. Proceed to 1st Street (Nutmeg Rd. S.) turn left.
 6. M.H. Rhodes Cramer is ¼ mile on left.

- FROM THE EAST**
1. Take 84 West to Hartford go past Buckland Mall.
 2. Take Exit onto Rte 291 West to Rte 5.
 3. Take Exit Rte 5 South Windsor. Turn Left onto Rte 5 (John Fitch Blvd).
 4. Proceed to 3rd light, turn right onto Pleasant Valley Rd
 5. Proceed to 1st Street (Nutmeg Rd. S.) turn left.
 6. M.H. Rhodes Cramer is ¼ mile on left.